

SUMMARY

System Guard Enhanced Features

Issue August 2009

Use OEM Customers

Pages 2

Enhanced features supported by SystemGuard

- SystemGuard provides support for MS Windows Vista from V3.30
- SystemGuard provides support for MS Windows 7 from V3.40
- Optional mode: "No Adjustments" (User cannot change any settings) available from V3.30
- Note: W2K will no longer be supported by SystemGuard

File / directory structure

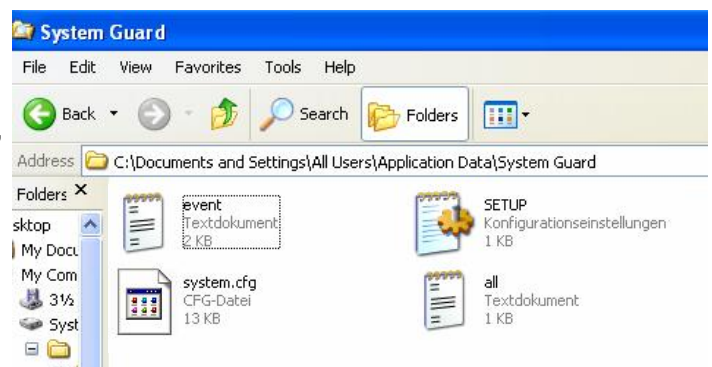
Due to the support for MS Windows Vista resp. Windows 7, the user related files are now stored in following directory:

for Windows XP:

...Documents and Settings\All Users\Application Data\System Guard

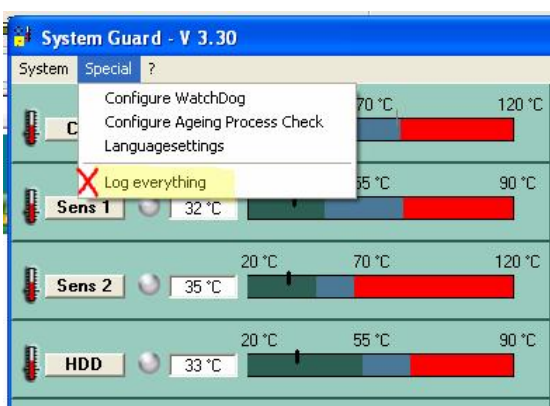
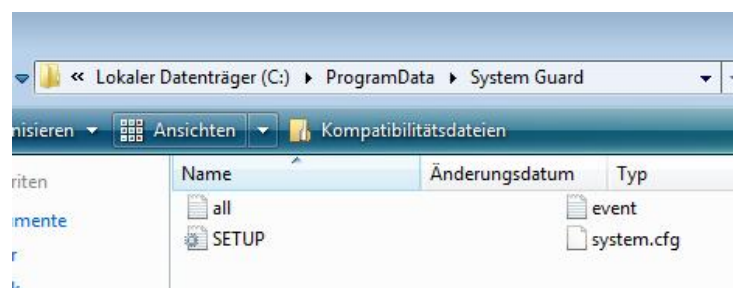
for Windows Vista / Windows 7:

...Program Data\System Guard



Please note that for standard OS installation these are hidden directories!

Note: In order to force SystemGuard to re-initialize the system (check default fan speed etc.), SystemGuard needs to be closed; then the file *system.cfg* in the hidden directory has to be deleted and SystemGuard can be started again.



In standard operating mode, SystemGuard can be configured to create consecutively a log file of all related monitoring data. This log file *all.log* is also available in the hidden directory.

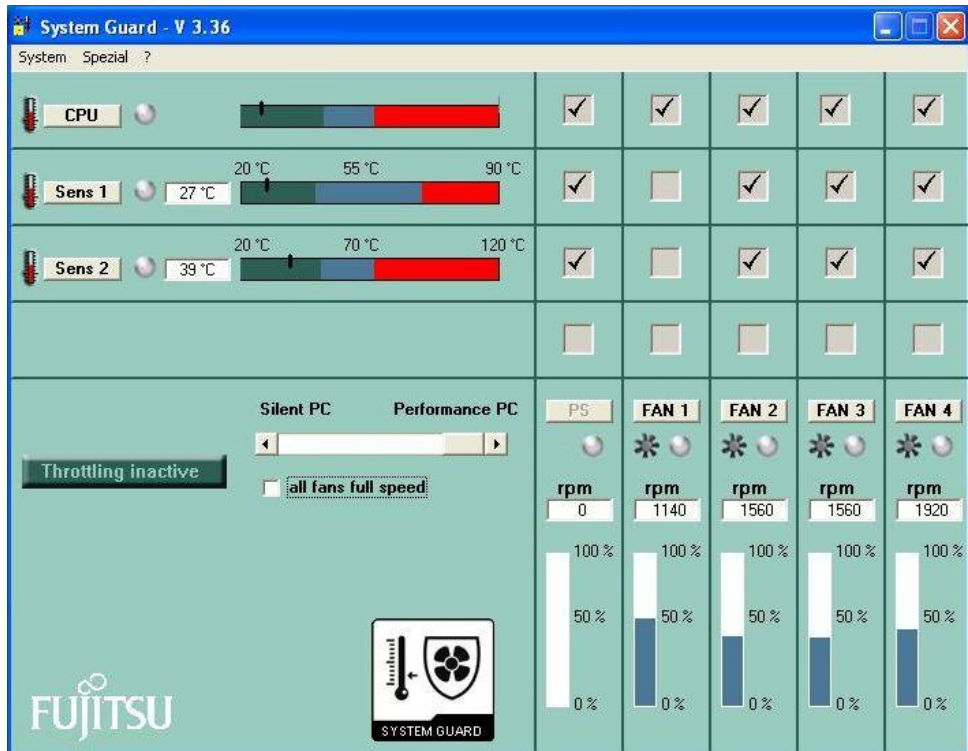
Optional mode: "No Adjustments"

Due to customer requests, SystemGuard ≥ V3.30 offers an option to prevent the user from changing any settings like fan/sensor influence matrix, fullspeed button, silent/performance-slider (available for certain mainboards only) and all "Special" functions like watchdog (available for certain mainboards only), monitoring data logging and fan ageing check.

Option a) Install SystemGuard via command line parameter:

setup.exe /v"NOADJUSTMENTS=YES" (please do not change any syntax)

No setting can be changed by user!



Option b) Run a standard installation, then change appropriate settings within the configuration file Setup.ini, likewise located in the hidden directory.

Setup.ini:

```

.....
.....
[GUI Settings]
Adjustments = 1 --> change setting from 1 to 0 in order to avoid user changes
.....
[Ageing Process]
Interval = -1 x)
Enabled = 0 --> Fan ageing check can be enabled (1) or disabled (0)
    
```

x) Note: If fan ageing check is enabled, the related time-frame can be selected here:
 0=daily
 1=every 2 days
 2=every 5 days
 3=every 10 days
 4=every month
 5=every 2 months
 6=every half year

Note: If option a) is used, fan ageing check is disabled.