

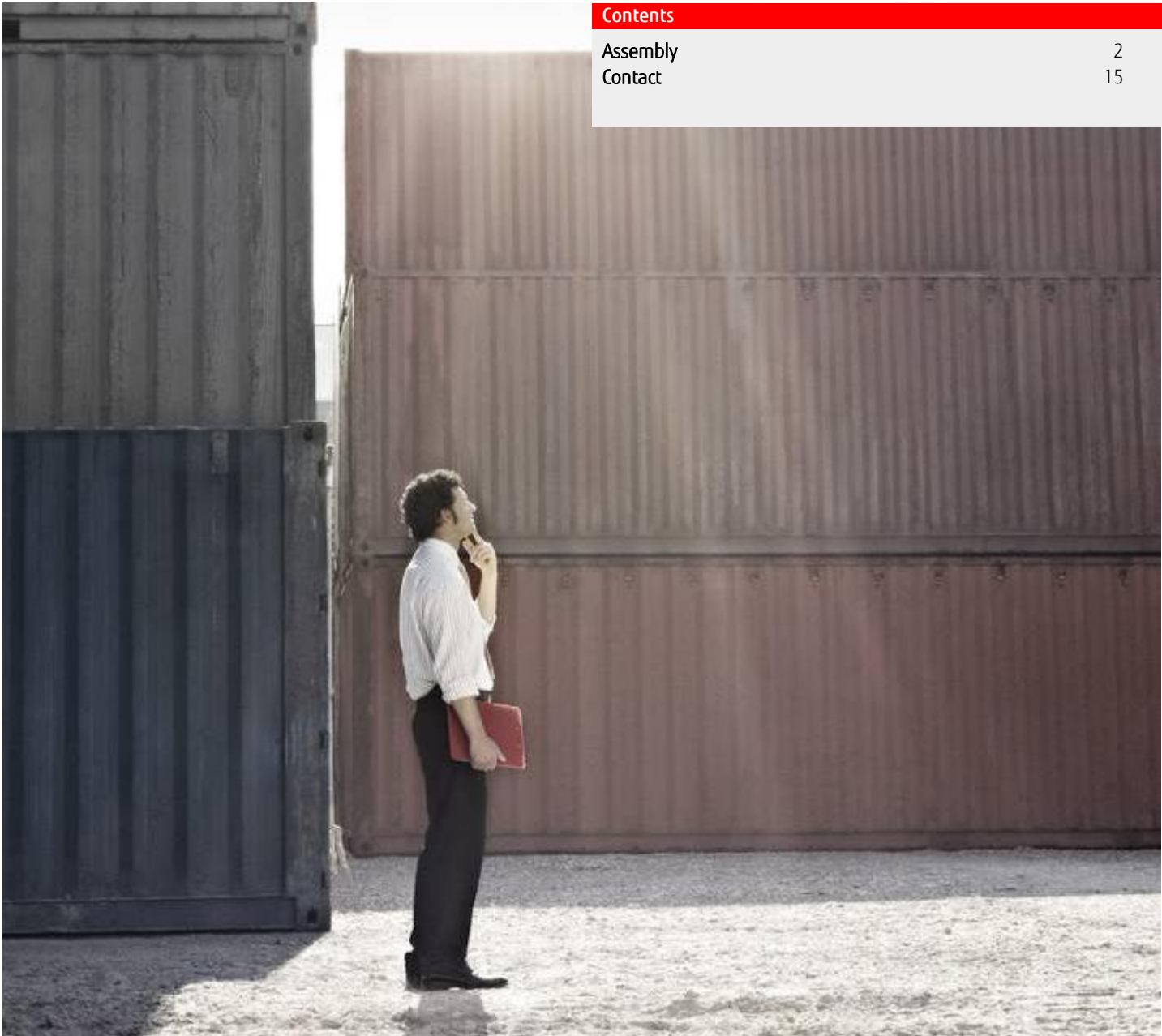


# How To

## Assembly advice for Fujitsu Industrial Mainboard D3003-S & DASH-Manageability LAN Card 2907-Adapter

### Contents

Assembly	2
Contact	15



# Assembly

To assemble the LAN Card D2907-Adapter into the Fujitsu Industrial Mainboard D3003-S please perform the following steps:

---

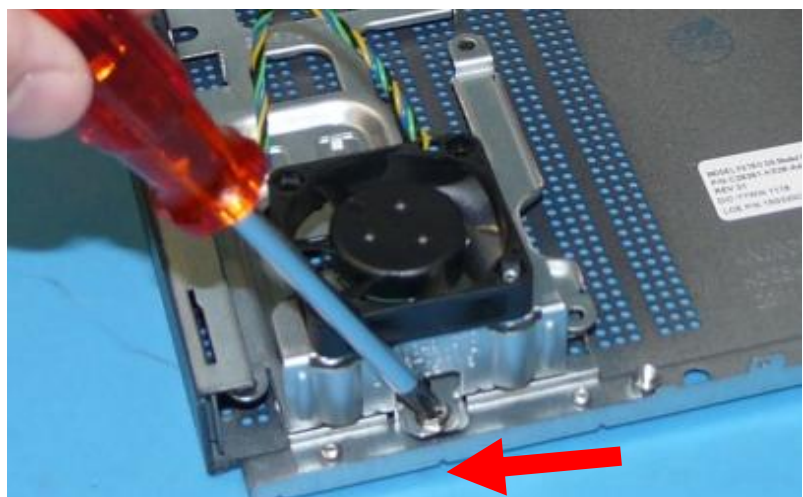
**1**  
IPC Chassis closed



**2**  
Open chassis with kit accessories



**3**  
HDD bracket  
If you would like to configure the system with a HDD you have to use the HDD bracket.  
Therefore unscrew the HDD bracket and remove it.





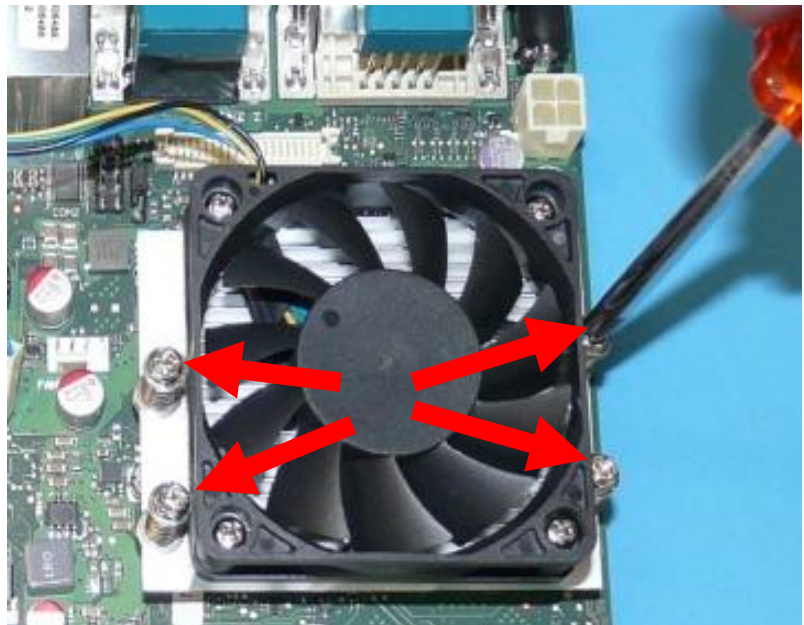
**4**

D3003-S Mainboard with cooling unit



**5**

Please mount the cooling unit with four screws as shown on the picture



**6**

D3003-S in IPC Chassis

Insert the mainboard into the chassis

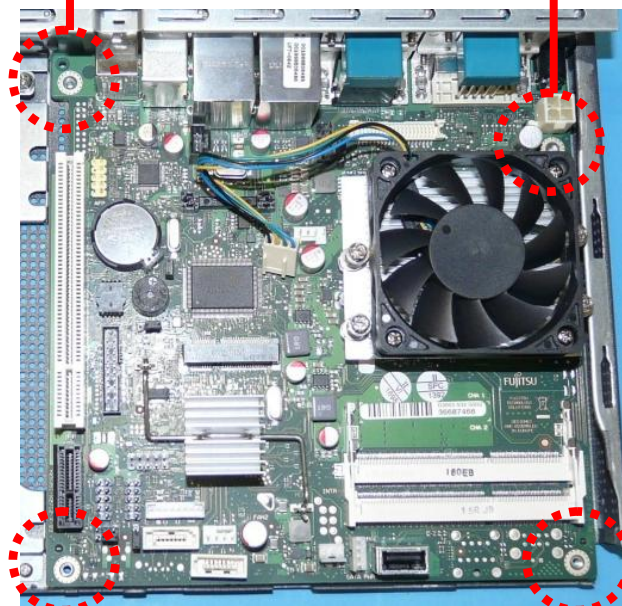
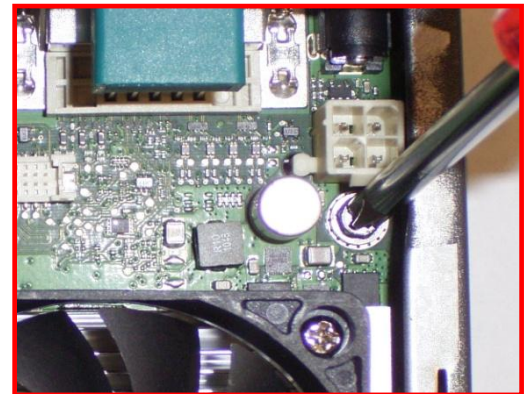




- 7**  
Be aware of the exact fitting of the board within the I/O-shield



- 8**  
Mount the Mainboard into the chassis with four screws

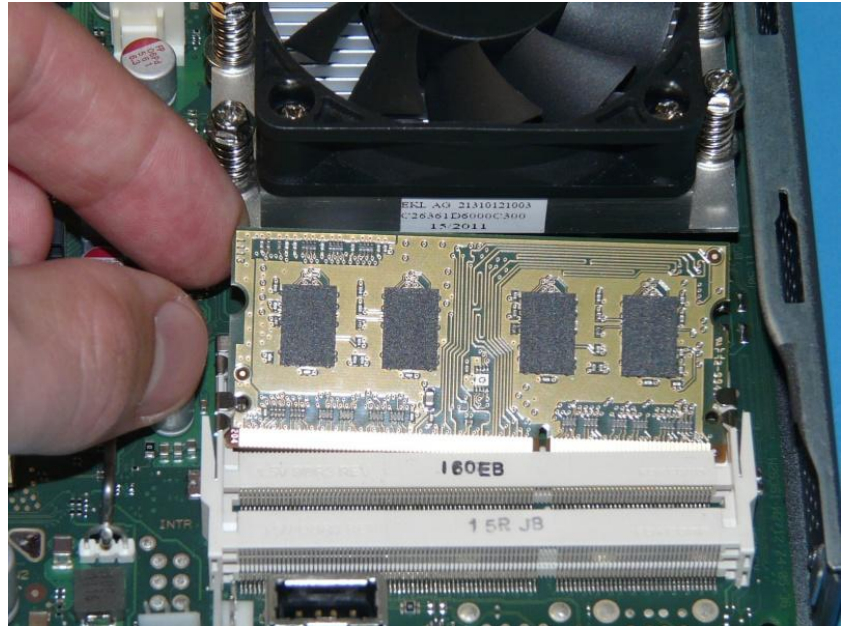




**9**

**Main memory – optional**

Insert the main memory from an oblique angle into the slot



**10**

**Main memory – optional**

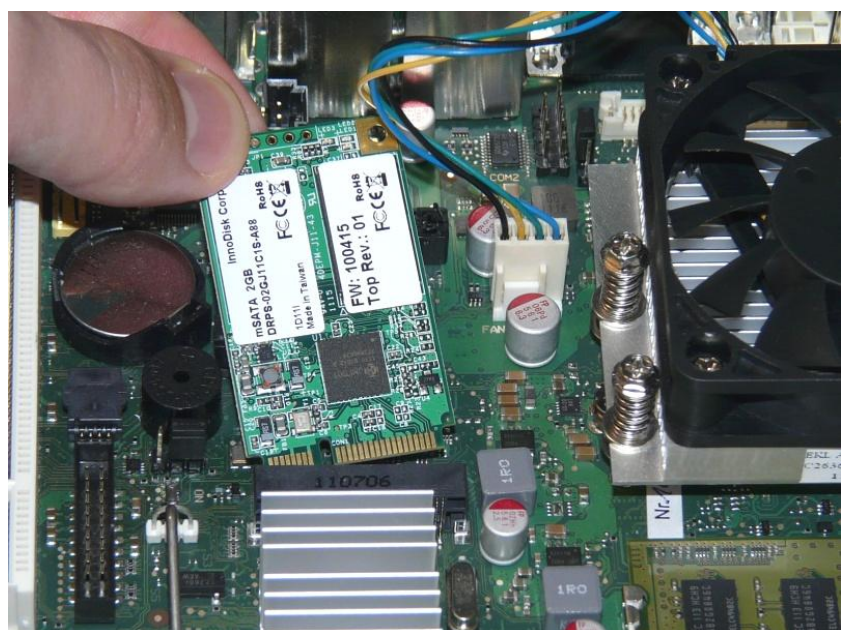
Push the memory carefully from top onto the mainboard until the clamp click into it from the side



**11**

**mSATA – optional**

Insert the mSATA card from an oblique angle into the slot

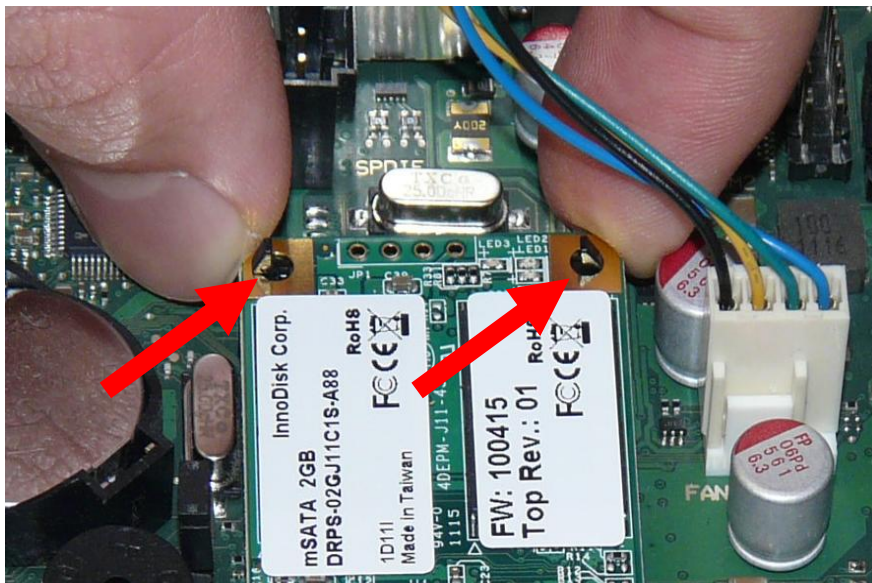




**12**

mSATA – optional

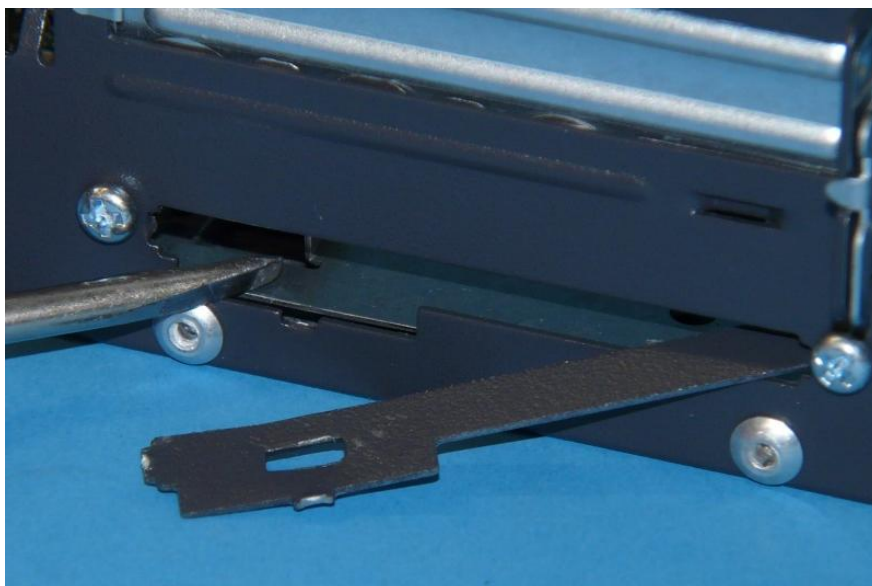
Push the memory carefully from top onto the mainboard until the clamp click into it.  
Take special care for the plastic tips!



**13**

WLAN module – optional

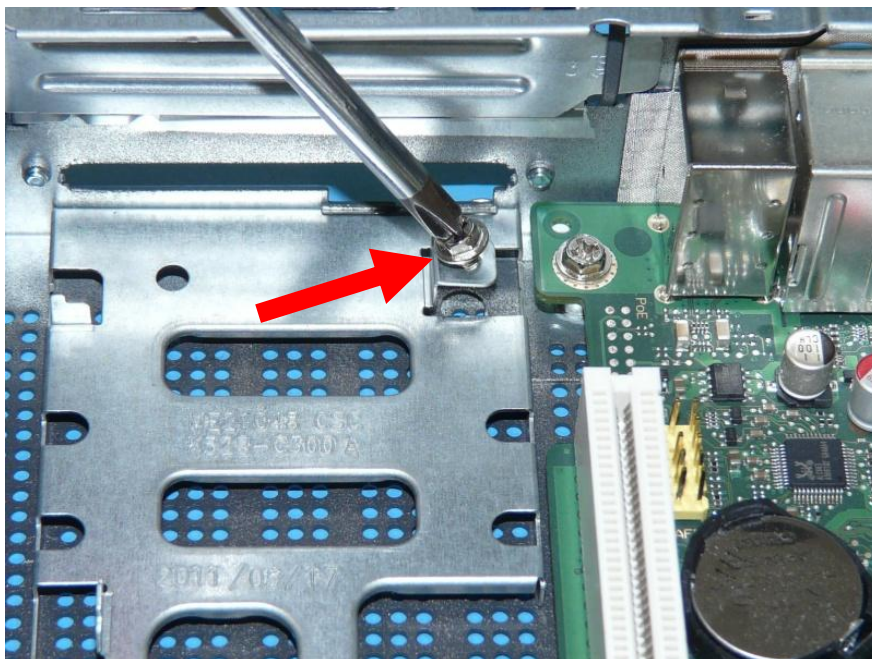
If you want to use the WLAN module,  
please break out carefully the metal part



**14**

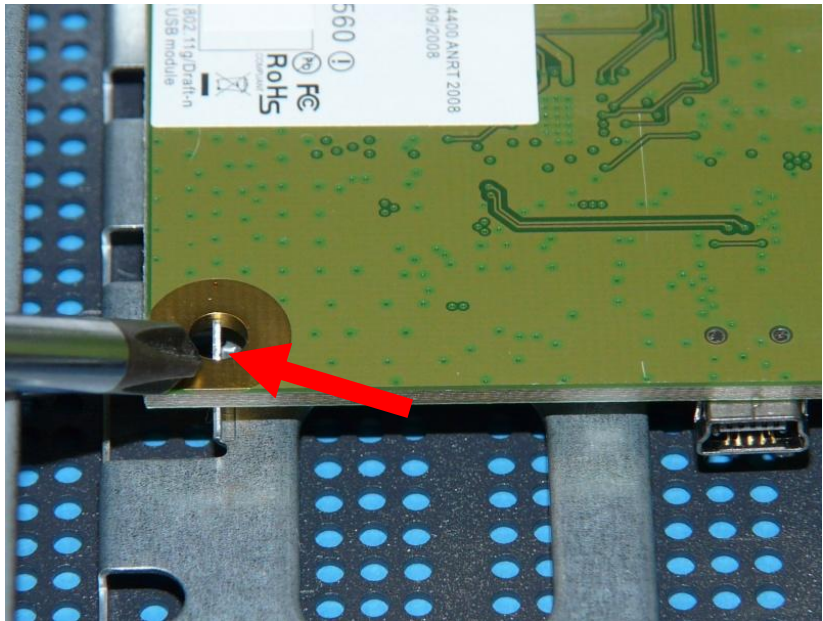
WLAN module – optional

Remove the screw for the WLAN module



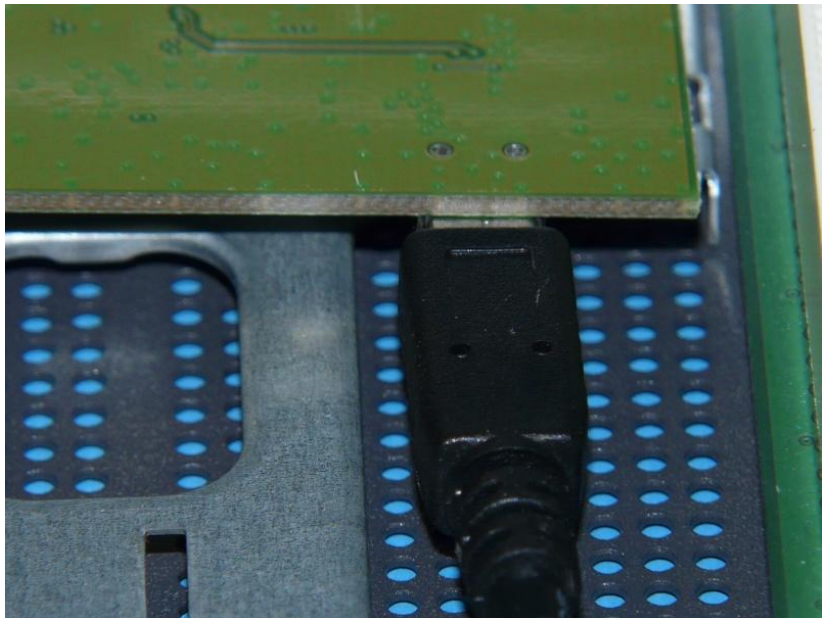
**15**  
WLAN module – optional

Insert the WLAN module  
Pay attention that the metal nose  
clicks into the module



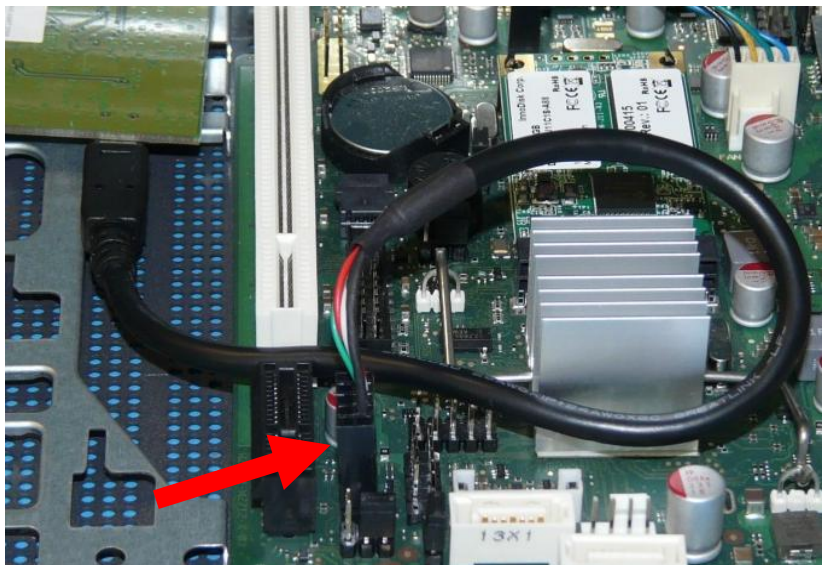
**16**  
WLAN module – optional

Connect the WLAN module with the  
USB cable



**17**  
WLAN module – optional

Connect the WLAN USB cable with  
the mainboard





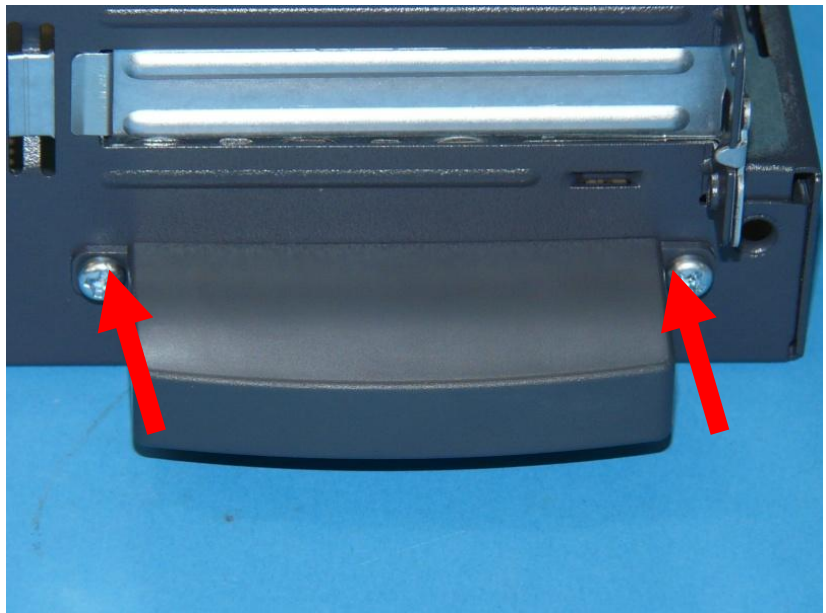
**18**  
WLAN module – optional

Cover the WLAN module with the plastic over



**19**  
WLAN module – optional

Fix the plastic cover with two screws



**20**  
HDD – optional

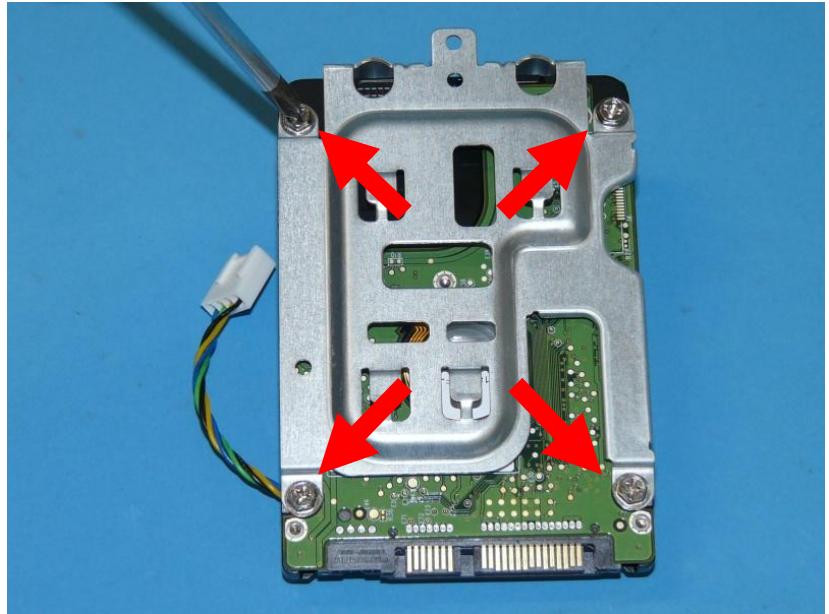
HDD bracket  
If you would like to configure the system with a HDD you have to use the HDD bracket.





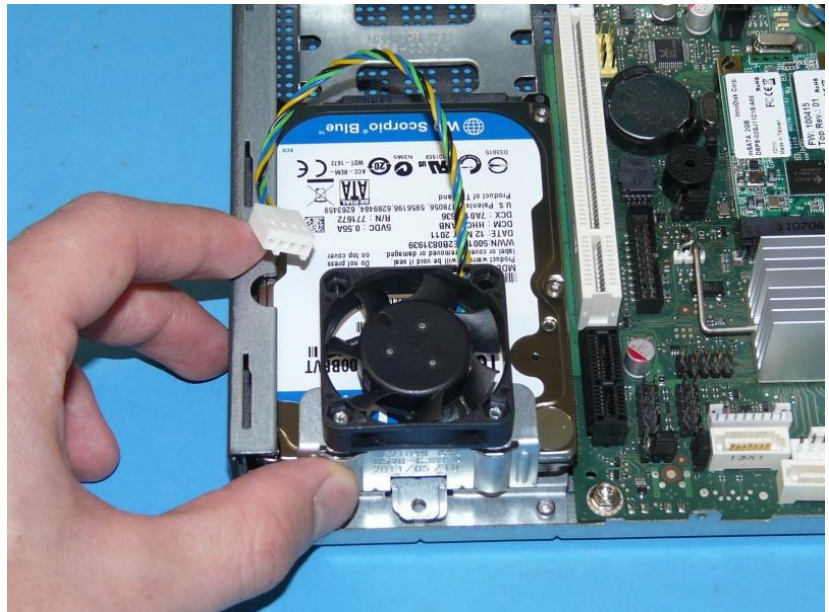
**21**  
HDD – optional

The HDD can be fixed with four screws at the bottom site of the bracket.



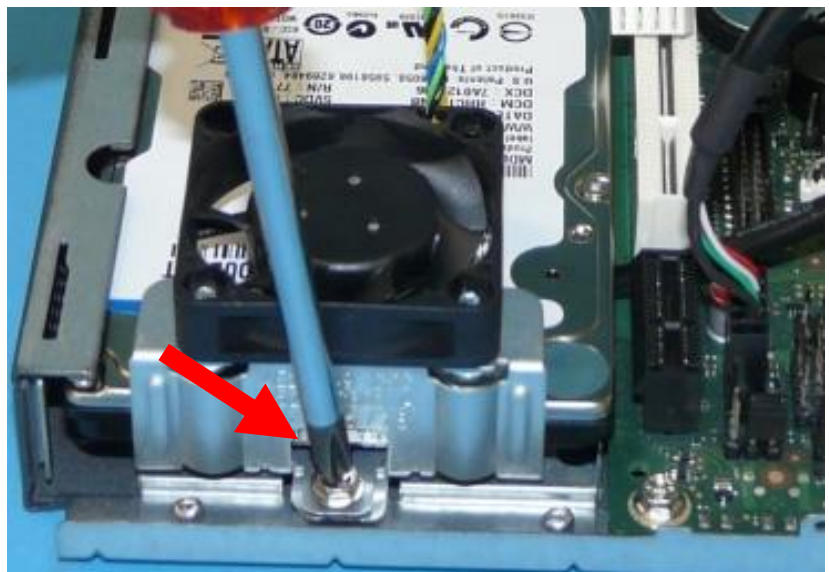
**22**  
HDD – optional

Slide the HDD bracket into the mounting form



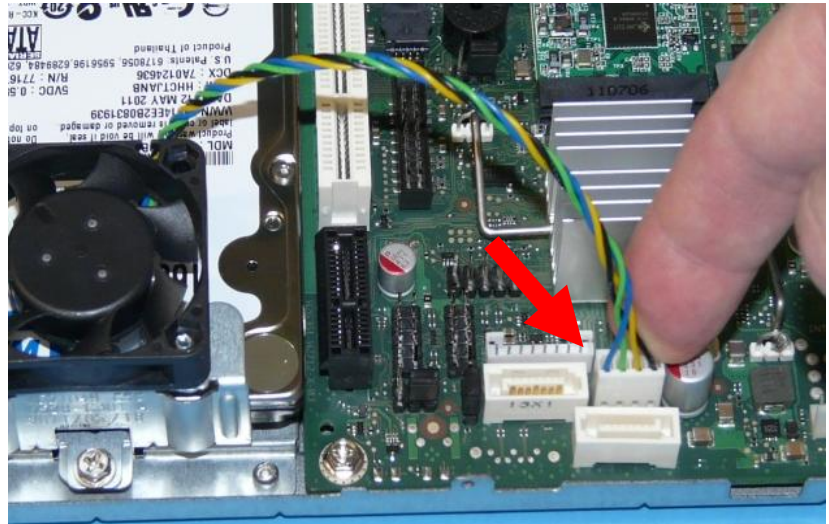
**23**  
HDD – optional

Fix the HDD bracket to the mounting form with a screw



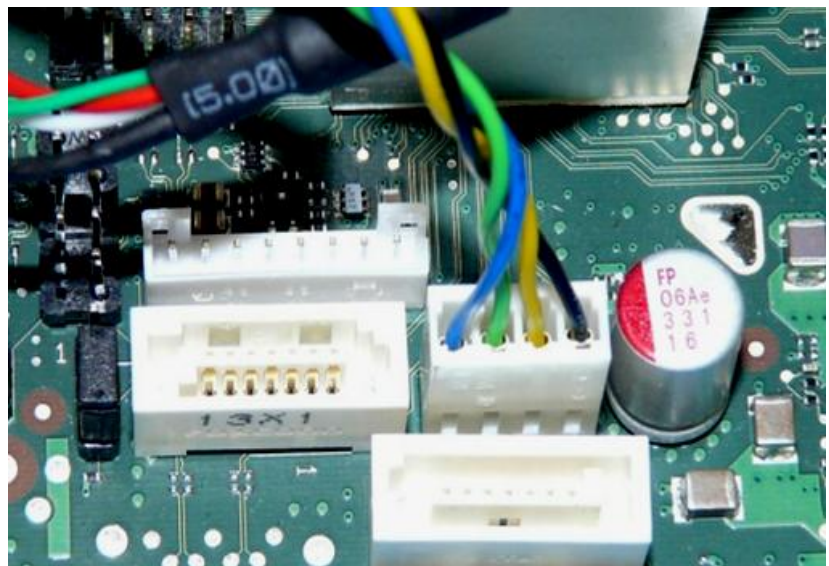
**24**  
HDD – optional

Connect the HDD with the  
mainboard



**25**  
HDD – optional

Connect the HDD with the  
mainboard





## 26

### Riser Card – optional extension card

Use the PCI slot to install the riser card.

Pay attention to the right fitting and be aware of the cable routing of the HDD and WLAN module



## 27

### D2907 LAN Card – optional

Fix the bracket to the LAN card with two screws



## 28

### D2907 LAN Card – optional

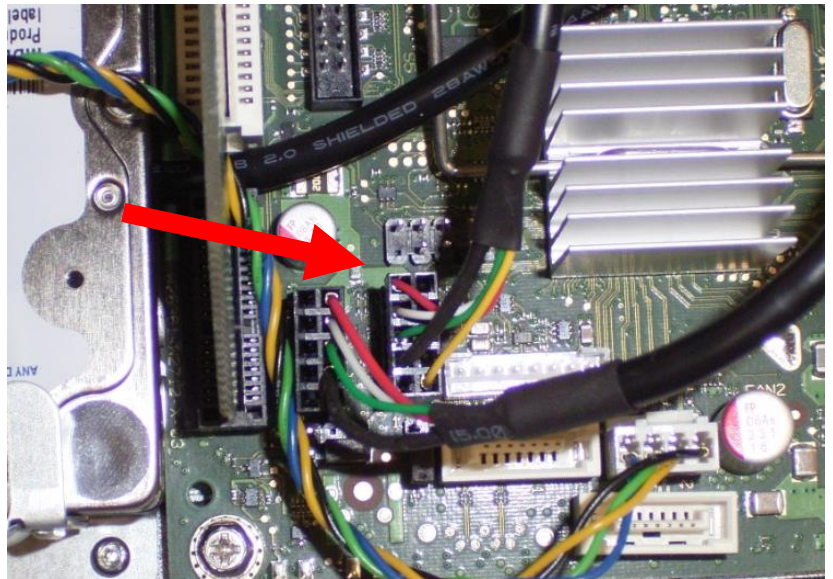
Connect the USB cable to the LAN card





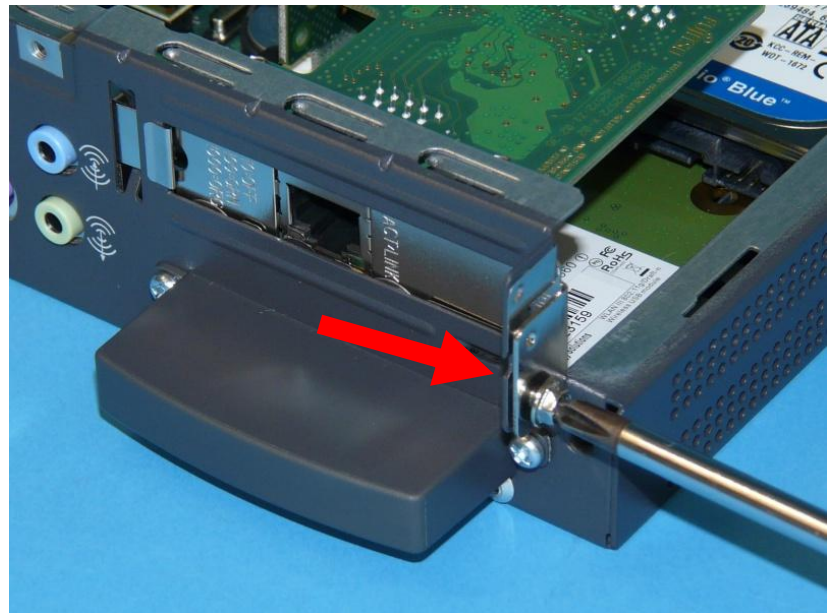
**29**  
D2907 LAN Card – optional

Use the USB cable to connect the LAN module with the mainboard.

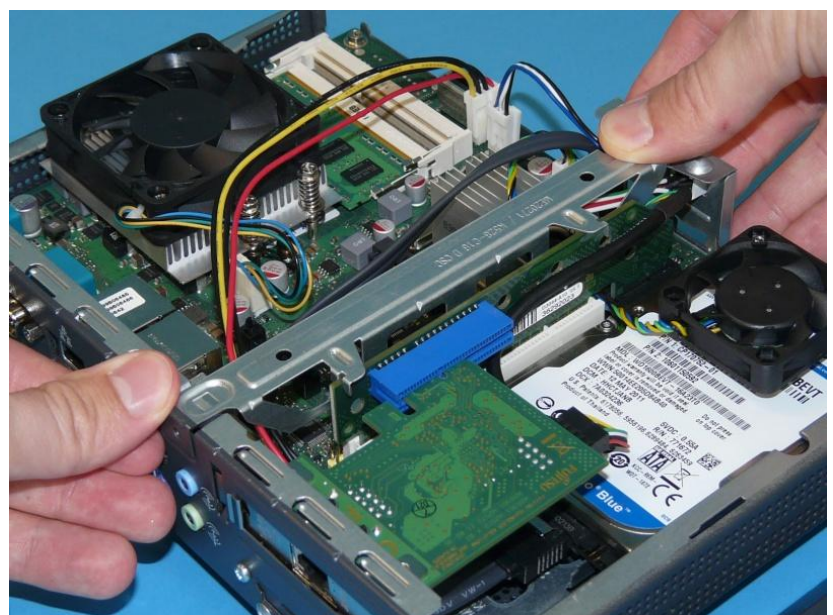


**30**  
D2907 LAN Card – optional

Slide the LAN Card from the side into the riser card and fix it with a screw.



**31**  
To fix the riser card in this position, add the crossing strut.  
Use one screw to mount the strut from the rear side.





**32**  
Pay attention to the right fitting.



**33**  
Close the IPC Chassis



**34**  
AC-plug fixture

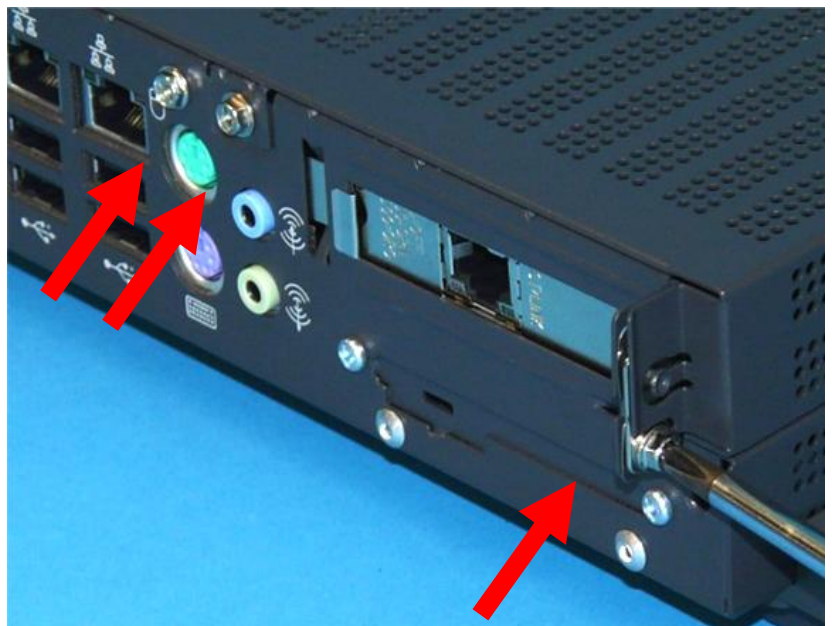
At the rear side of the chassis it is possible to fix the AC-plug with a fortification if necessary.



**35**  
Chassis mounting / foot assembly



**36**  
Mount the Chassis with three screws



**37**  
Connect with the LAN cable





# Contact

## Further information and contacts

---

If you have any further questions please contact the OEM Team.

**Contact:**

**Fujitsu Technology Solutions GmbH:**

OEM Mainboard Sales

Phone: +49 (0) 821 - 8043822

Fax: +49 (0) 821 - 8043329

Email: [OEM-Marketing@ts.fujitsu.com](mailto:OEM-Marketing@ts.fujitsu.com)

### Additional information and downloads

· General Information:

[www.ts.fujitsu.com/mainboards](http://www.ts.fujitsu.com/mainboards)

· DS D3003-S

<ftp://ftp.ts.fujitsu.com/pub/Mainboard-OEM-Sales/Products/Mainboards/Industrial&ExtendedLifetime/D3003-S/>

· DS D3044-Adapter

[ftp://ftp.ts.fujitsu.com/pub/Mainboard-OEM-Sales/Products/Accessories/Miscellaneous/DS\\_mini\\_ITX\\_Risercards.pdf](ftp://ftp.ts.fujitsu.com/pub/Mainboard-OEM-Sales/Products/Accessories/Miscellaneous/DS_mini_ITX_Risercards.pdf)

· DS D2907

[ftp://ftp.ts.fujitsu.com/pub/Mainboard-OEM-Sales/Products/Accessories/LAN\\_&\\_WLAN/Broadcom\\_PCleX1\\_D2907/DS\\_D2907\\_LAN-Broadcom\\_PCleX1.pdf](ftp://ftp.ts.fujitsu.com/pub/Mainboard-OEM-Sales/Products/Accessories/LAN_&_WLAN/Broadcom_PCleX1_D2907/DS_D2907_LAN-Broadcom_PCleX1.pdf)

· Documentation and downloads:

[ftp.ts.fujitsu.com/](http://ftp.ts.fujitsu.com/)

---

**Contact**

FUJITSU Technology Solutions

OEM Mainboard Sales

E-mail: [oem-sales@ts.fujitsu.com](mailto:oem-sales@ts.fujitsu.com)

Website: <http://ts.fujitsu.com>

2011-10-24 CE EN

All rights reserved, including intellectual property rights.  
Technical data subject to modifications and delivery subject to availability. Any liability that the data and illustrations are complete, actual or correct is excluded. Designations may be trademarks and/or copyrights of the respective manufacturer, the use of which by third parties for their own purposes may infringe the rights of such owner. For further information see: [http://ts.fujitsu.com/terms\\_of\\_use.html](http://ts.fujitsu.com/terms_of_use.html)  
Copyright Fujitsu Technology Solutions GmbH 2010